

Luxury Shirting

With Boulevard's refined fits, modern styling and impeccable attention to detail.



Fifth Avenue

65% Cotton 33% Polyester 2% Elastane

Ladies semi-fitted yarn dyed fine stripe soft textured stretch cotton blend shirt.

Mens euro-fit yarn dye fine stripe soft textured stretch cotton blend shirt.

Care Instructions

Machine wash cold. Gentle cycle with like colours. Do not soak. Do not bleach. Tumble dry low. Cool iron. Do not dry clean.



Vermont

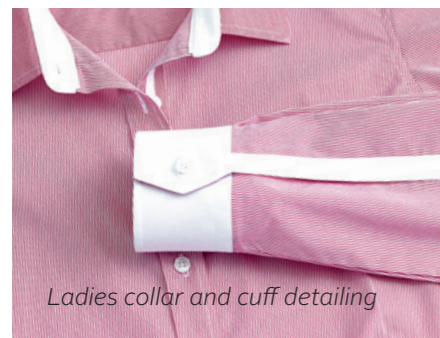
60% Cotton 40% Polyester

Ladies semi-fitted open neck yarn dyed wide stripe soft textured stretch cotton blend shirt.

Mens euro-fit yarn dyed wide stripe soft textured stretch cotton blend shirt.

Care Instructions

Machine wash cold. Gentle cycle with like colours. Do not soak. Do not bleach. Tumble dry medium. Cool iron. Do not dry clean. Warm iron. Do not dry clean.



Ladies collar and cuff detailing



Ladies 3/4 sleeve detailing



Mens collar and cuff detailing



Ladies collar and cuff detailing



Mens French cuff detailing



Hudson

100% Cotton

Ladies semi-fitted open neck yarn dyed dobby shirt.

Mens executive-fit dobby shirt.

Care Instructions

Machine wash cold with like colours. Do not soak. Do not bleach. Do not tumble dry. Warm iron. Do not dry clean.



Bordeaux

65% Cotton 33% Polyester 2% Elastane

Ladies semi-fitted open neck yarn dyed fine stripe soft textured stretch cotton blend shirt.

Care Instructions

Machine wash cold. Gentle cycle with like colours. Do not soak. Do not bleach. Tumble dry low. Cool iron. Do not dry clean.



Solanda Plain

100% Polyester

Ladies semi-fitted open neck soft touch polyester shirt.

Care Instructions

Machine wash warm. Gentle cycle with like colours. Do not soak. Do not bleach. Tumble dry medium. Cool iron. Do not dry clean.



Solanda Print

100% Polyester

Ladies semi-fitted open neck soft touch polyester shirt.

Care Instructions

Machine wash warm. Gentle cycle with like colours. Do not soak. Do not bleach. Tumble dry medium. Cool iron. Do not dry clean.



Ladies collar and cuff detailing



Ladies 3/4 sleeve detailing



Mens cuff detailing

Eye-Catching Extras

Complete the look with classic Boulevard essentials.



Mens Spot Tie
100% Polyester

Care Instructions
Dry clean only 30c Ⓟ.



Mens Single Contrast Stripe Tie
100% Polyester

Care Instructions
Dry clean only 30c Ⓟ.



Mens Self Stripe Tie
100% Polyester

Care Instructions
Dry clean only 30c Ⓟ.



Men Wide Contrast Stripe Tie
100% Polyester

Care Instructions
Dry clean only 30c Ⓟ.

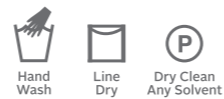


Ladies Leather Reversible Belt
100% Leather



Ladies Monotone Woven Scarf
100% Viscose

Care Instructions
Hand wash cold. Line dry in shade. Dry-cleanable 30c Ⓟ.



Mens Leather Reversible Belt
100% Leather

Comfort Smart Fabrics

New fabric technology meets workplace demands.



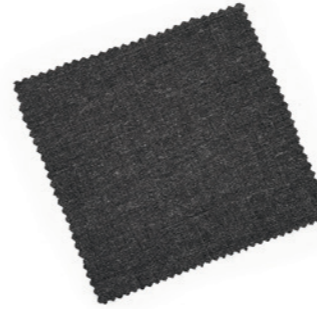
Rococo
Cross Yarn Dye Suiting - Black & White
72% Polyester 24% Viscose 4% Elastane

Care Instructions

Pants and Skirts - Machine wash cold. Gentle cycle with like colours. Do not soak. Do not bleach. Do not tumble dry. Line dry in shade. Cool iron. Dry-cleanable.



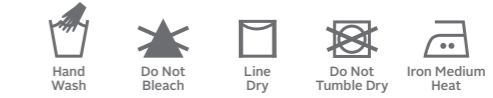
Jackets - Dry clean only 30c Ⓟ.



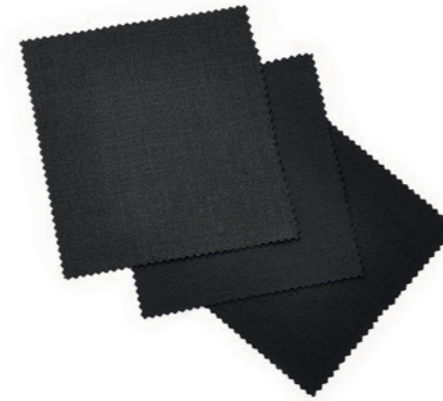
Comfort Wool Stretch
55% Polyester 43% Wool 2% Elastane

Care Instructions

Pants and Skirts - Machine wash on wool cycle or hand-wash using recommended wool detergent. Wash with similar colours. Rinse well. Do not bleach, soak, tumble dry. Line dry in shade. Warm iron (wool settings). Recommend dry clean 30c Ⓟ.



Jackets and Vests - Dry clean only 30c Ⓟ.



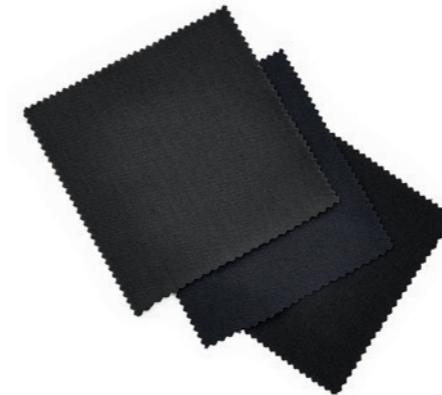
Cool Stretch Plain
92% Polyester 8% Charcoal

Care Instructions

Pants and Skirts - Warm or cold machine wash. Wash with similar colours. Do not bleach. Do not tumble dry. Line dry in shade. Warm iron. Recommend dry clean 30c Ⓟ.



Jackets and Vests - Dry clean only 30c Ⓟ.



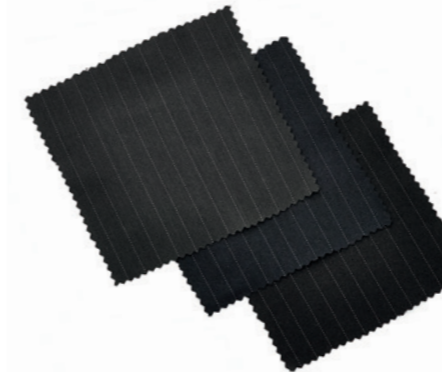
Cool Stretch Pinstripe
92% Polyester 8% Charcoal

Care Instructions

Pants and Skirts - Warm or cold machine wash. Wash with similar colours. Do not bleach. Do not tumble dry. Line dry in shade. Warm iron. Recommend dry clean 30c Ⓟ.



Jackets and Vests - Dry clean only 30c Ⓟ.



Note - When ironing, use a warm iron and recommended steam setting. Otherwise iron inside out or use a cover cloth. (A hot iron will shine the polyester yarn in the fabric). We recommend Qualified Professional Laundering for long term care of the Comfort Wool Stretch Suiting garments. Line Dry. DO NOT TUMBLE DRY your garment. We recommend drying in shade. Direct sunlight will accelerate fading of garment.